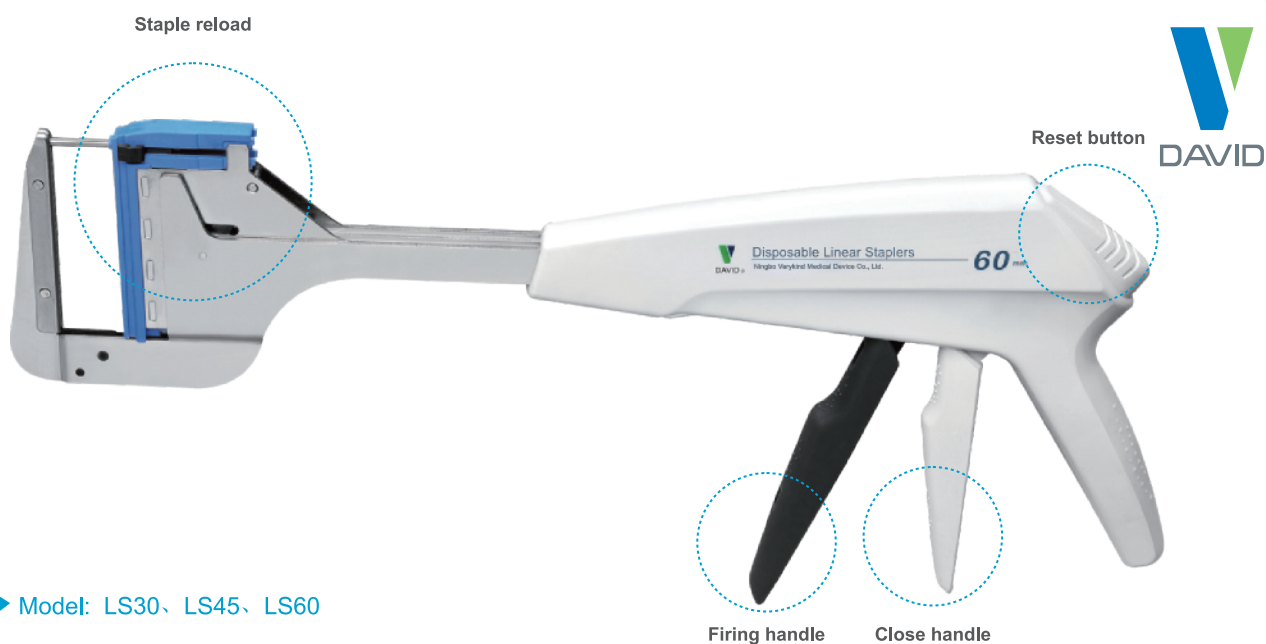
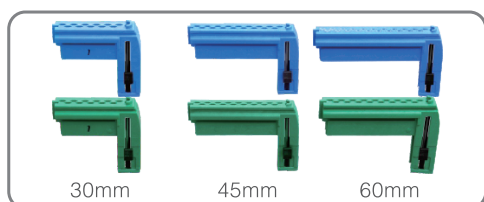


# Disposable Linear Staplers

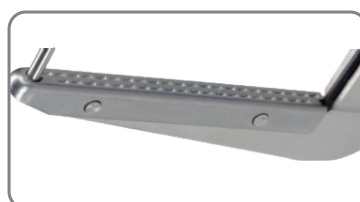


▶ Model: LS30、LS45、LS60

## Features and Advantages:



Select different reload according to different suture length and tissue thickness.



The unique design of staple slot makes better positioning of the staples while operating.



The staple holder sides provide a cutting guide to ensure easily cutting the complete tissue and the smooth cut edge.

## Application:

1. For use in suturing tissue's stump and incision during the digestive tract reconstruction and multi-visceral resection surgery.
2. Suture horizontally to make the tissue uniformly forced.
3. The locating pin to avoid tissue spillover.
4. Close and fire separately with clearly tactile and auditory feedback.
5. Two different staple heights to meet the suture request of different tissue thickness.
6. Titanium alloy staple brings better strength to prevent anastomotic fistula.

Stapler model	Model of staple reload	Cartridge Color	Staple height (mm)	Staple quantity (pc)
LS30*3.5	LSR30*3.5	(Blue)	3.5	11
LS30*4.8	LSR30*4.8	(Green)	4.8	11
LS45*3.5	LSR45*3.5	(Blue)	3.5	17
LS45*4.8	LSR45*4.8	(Green)	4.8	17
LS60*3.5	LSR60*3.5	(Blue)	3.5	21
LS60*4.8	LSR60*4.8	(Green)	4.8	21